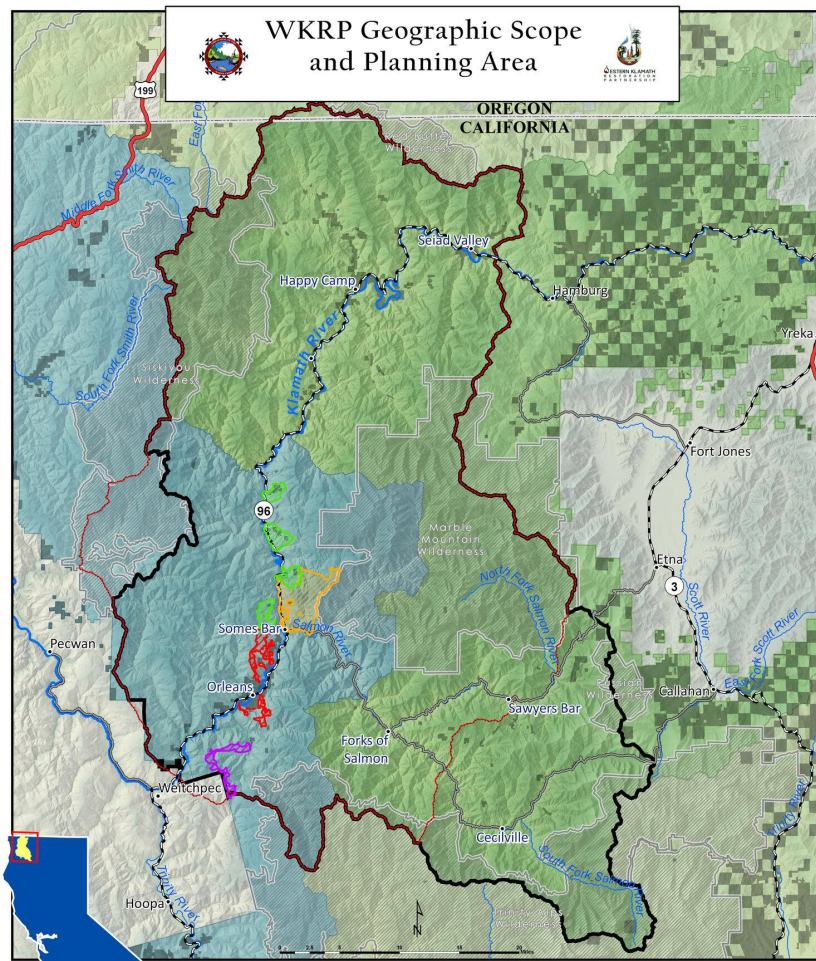


# Forest and Fire Management

An aerial photograph of a river valley. A large, dark, charred area, likely a fire scar, runs along the left bank of a river. The river flows from the background towards the foreground. On the left side of the river, there is a small town or village with several buildings and a road. The surrounding hills are covered in dense green forest. The sky is clear and blue.

# WKRK Geographic Scope and Planning Area



The Karuk Tribe and the Forest Service co-steward the Western Klamath Restoration Partnership planning area. The majority of this landscape is Karuk Aboriginal Territory and as the original stewards of this land, it is our responsibility to take care of this place.





Fire exclusion is as great or a greater threat than climate change to our homes, forests, and communities.

Athithúvfuunupma is the Karuk name for Happy Camp where the Slater Fire burned nearly 160,000 acres. This means the place where Hazel Creek flows through and refers to what is now called Indian Creek.

Traditional  
burning  
practices would  
bring back a fire  
adapted  
landscape.





With a well-trained  
community  
workforce we  
could bring back  
village style  
burning.

100 people burning 1 acre  
each in 100 places vs.  
100 people burning 20  
acres in 1 place.

The Karuk Tribe has one of the biggest TREX events in the nation and is seeking to build up this program.



ahikshúpaan (fire teacher)  
energizing    incredible    Once in a lifetime  
sakriivha (to be hard)  
fierce    reconnection    Inspiring    growth fun  
ishimfir (brave, tough)    life changing  
Amazing Healing    sunshine necessary  
EMPOWERING  
heartwarming  
healing (the land & me)  
CULTRUAL CONTINUANCE